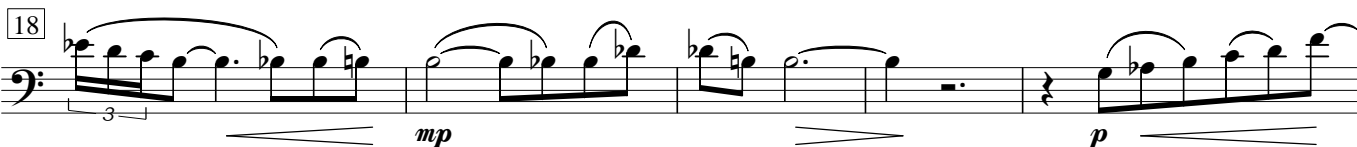
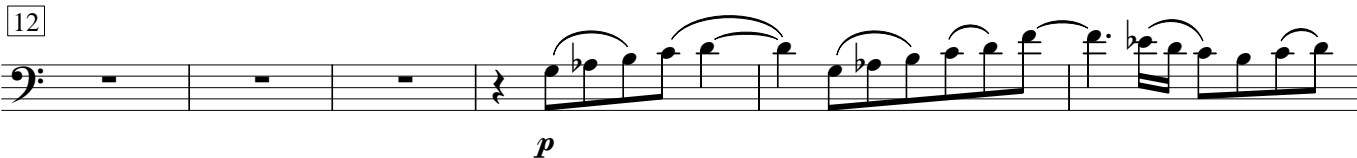
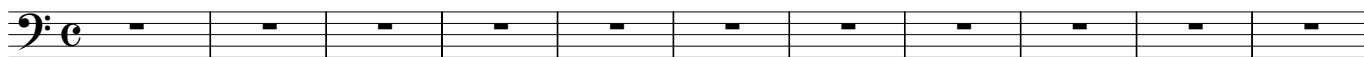


# I. Egypt

Moderato ♩ = cca 88



Con moto ♩ = cca 120



60

*p* *mf*

Measures 60-64: Bass clef, 3/8 and 3/4 time signatures. Features a melodic line with slurs and ties, starting with a piano (*p*) dynamic and ending with a mezzo-forte (*mf*) dynamic.

65

*f*

Measures 65-70: Bass clef, 3/4 and 3/8 time signatures. Features a melodic line with slurs and ties, starting with a piano (*p*) dynamic and ending with a forte (*f*) dynamic.

71

Measures 71-74: Bass clef, 3/4 and 3/8 time signatures. Features a melodic line with slurs and ties, starting with a piano (*p*) dynamic and ending with a mezzo-forte (*mf*) dynamic.

75

Measures 75-78: Treble clef, 3/4 and 3/8 time signatures. Features a melodic line with slurs and ties, starting with a piano (*p*) dynamic and ending with a mezzo-forte (*mf*) dynamic.

79

Measures 79-82: Bass clef, 3/4 and 3/8 time signatures. Features a melodic line with slurs and ties, starting with a piano (*p*) dynamic and ending with a mezzo-forte (*mf*) dynamic.

83

Meno mosso

*sf*

Measures 83-88: Treble clef, 3/4 and 3/8 time signatures. Features a melodic line with slurs and ties, starting with a piano (*p*) dynamic and ending with a sforzando (*sf*) dynamic. The tempo marking "Meno mosso" is present above the staff.

89

*mp*

Measures 89-92: Bass clef, 3/4 and 3/8 time signatures. Features a melodic line with slurs and ties, starting with a mezzo-piano (*mp*) dynamic and ending with a piano (*p*) dynamic.

93

*mp* *p* *pp* *Rit.*

Measures 93-96: Bass clef, 3/4 and 3/8 time signatures. Features a melodic line with slurs and ties, starting with a mezzo-piano (*mp*) dynamic and ending with a pianissimo (*pp*) dynamic. The tempo marking "Rit." is present above the staff.